



**HITCHCOCK**  
**DESIGN GROUP**

---

*Focus on Civic*



We are a national, multi-disciplinary landscape architecture, placemaking and urban design practice focused on building lasting relationships with the clients we serve, the communities we design for, and the colleagues we establish on every project.







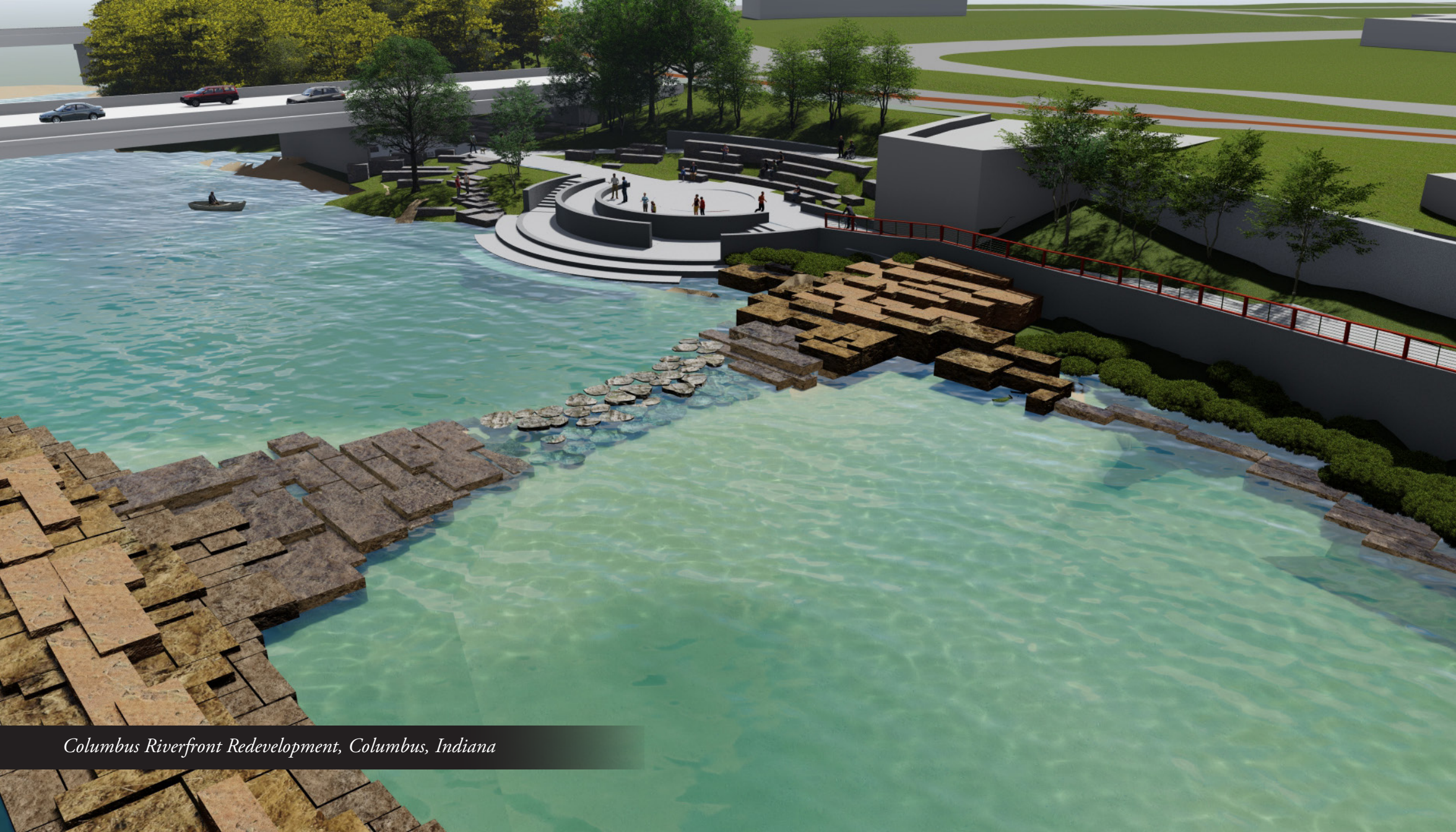
*La Grange Plaza, La Grange, Illinois*

## **Purposeful design is a community's differentiator.**

Hitchcock Design Group's highly collaborative approach helps cities add measurable value to their public spaces. Our purpose is to improve people's lives and the communities in which they live, work and play through interactions with creative outdoor spaces. With a portfolio made up of clients and stakeholders similar to you, we understand what it takes to move projects like yours from vision to reality.

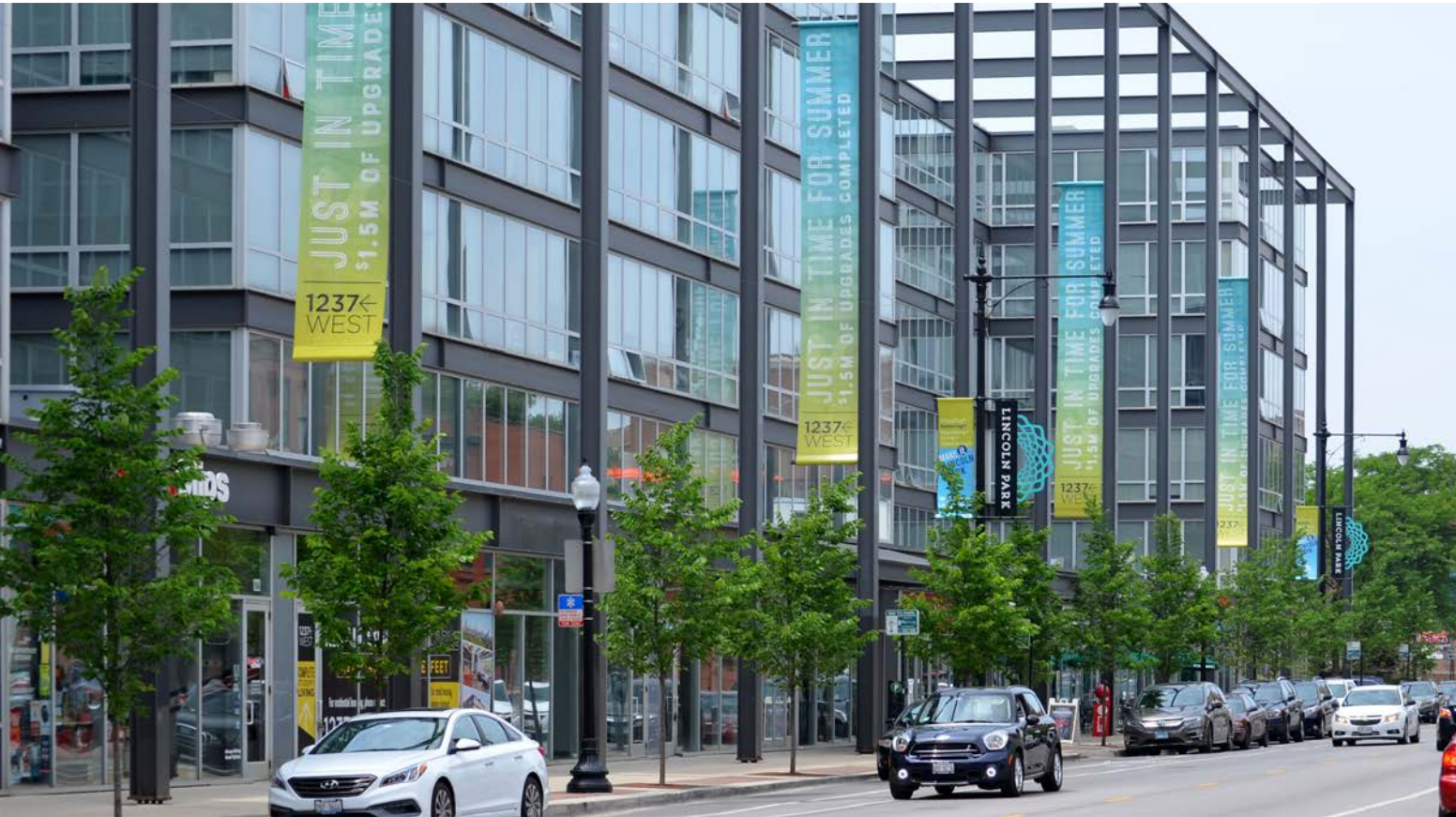
We understand the desires and demands of our audiences, resulting not just in timeless landscapes, but enhanced living experiences for all community members.





*Columbus Riverfront Redevelopment, Columbus, Indiana*





## Design that honors community and promotes engagement.

We are passionately committed to making a difference in people's lives by providing high quality designs that value a supportive environment, create flexible use spaces, and promote community.





## Riverside Drive Promenade

Elgin, Illinois

Today, the three-acre, \$11 million Riverside Promenade serves as the “front porch” to businesses and apartments that were developed on the site of the former department store. Hitchcock Design Group facilitated community engagement, master planned the riverfront, and led the multidisciplinary consultant team for all Riverside Promenade improvements.









## Downers Grove Civic Center

Downers Grove, Illinois

The new Civic Center is adjacent to the Metra Station and the downtown area. The project includes a community walk that commuters will use to connect to nearby neighborhoods and a civic plaza. Our team worked to create an animation of the site to present to the community. The design encompassed only using native plantings, without using turf or non-native ornamental plants.









## Kankakee Riverfront

Kankakee, Illinois

The \$20 million Riverwalk Mill Race District will feature a national-caliber whitewater course carved out of a nine-foot low-head dam, a high-amenity promenade, a festival street, transient boat facilities and mixed-use redevelopment sites. Connected by four miles of trails, the riverfront will also feature artistically sculpted riverbanks, a river-themed children's garden, and numerous neighborhood and river connections.











## **Meet your civic market experts.**

Welcome to the HDGNation! We are a dedicated and experienced team who understand your market, your mission and your language.





**RANDY ROYER, ASLA, CLARB |**  
**SENIOR PRINCIPAL**

Randy's broad range of experience over his 30-year career includes designing museum grounds in Japan, estates in South Florida, and streetscapes, parks, and corporate campuses in Indiana. He provides active leadership for many of the projects within our Indianapolis design studio and seeks to deliver value through excellent design that meets our clients' needs and is sustainable and maintainable. Collaboration is a key component of his approach to Landscape Architecture and Urban Design, which is the reason he has developed multiple long-standing relationships with clients and consultants over the years. Randy calls Columbus, Indiana home where he is very active in the community. His community involvement includes volunteering on various committees and serving as a board member for the Columbus, Indiana Architectural Archives for over a decade.

**(317) 613-6038**  
**rroyer@hitchcockdesigngroup.com**

*Project Experience*

---

**1821 Bicentennial Trail**, Columbus, Indiana

**2019 Exhibit Columbus | Frida Escobedo Installation**, Columbus, Indiana

**Bakalar Airport Central Green Master Plan**, Columbus, Indiana

**Bartholomew County Court Services Building**, Columbus, Indiana

**Bartholomew County Public Library Plaza Renovation**, Columbus, Indiana

**Columbus Neighborhood Branding**, Columbus, Indiana

**Columbus Riverfront**, Columbus, Indiana

**Greenfield Gateway and SR9 Corridor**, Greenfield, Indiana

**North Meridian Street Development Plan**, Indianapolis, Indiana

**South Meridian Streetscape**, Indianapolis, Indiana





## **TIMOTHY KING, PLA, ASLA | PRINCIPAL**

Tim's focus on municipal and mixed-use urban projects, along with his disciplined management skills, have helped many communities and developers increase hospitality, improve connectivity, and promote economic development through the conception, permitting, and construction of millions of dollars of high-profile public and private improvements. Recently, Tim has managed some of Hitchcock Design Group's most complex urban projects including multi-phased redevelopment plans, waterfronts, streetscapes, and transportation enhancements. A landscape architect with over 25 years of experience, Tim's commitment to excellence during the planning, design, and construction phases and his passion for creating better places has positioned Hitchcock Design Group as one of the leading planning and urban design firms in the region.

**(331) 229-5437**

**[tking@hitchcockdesigngroup.com](mailto:tking@hitchcockdesigngroup.com)**

### *Project Experience*

---

**Angola Public Square and Streetscape Improvement Plan**, Angola, Indiana

**Boneyard Creek Second Street Detention Basin**, Champaign, Illinois

**Burr Ridge**, Burr Ridge, Illinois

**Elgin Riverfront**, Elgin, Illinois

**Houdini Plaza**, Appleton, Wisconsin

**Interstate 55 and County Line Road Enhancements**, Burr Ridge, Illinois

**Kankakee Riverfront**, Kankakee, Illinois

**La Grange Streetscape and Signage**, La Grange, Illinois

**Neenah Waterfront Master Plan and Shattuck Park**, Neenah, Wisconsin

**McHenry Riverwalk Miller Point**, McHenry, Illinois

**Rockford Riverwalk**, Rockford, Illinois

**The Glen Town Center Streetscape**, Glenview, Illinois





## **JOEL E. BALDIN, ASLA | PRINCIPAL**

An award-winning landscape architect since 1993, Joel has used his extensive planning, design, and project management skills to guide many projects from vision to implementation. Throughout his career, Joel has been highly involved in projects and organizations throughout the City of Chicago both professionally and personally and, as a result, has become a guiding force in the success of Hitchcock Design Group's Chicago portfolio. Joel's ability to identify a client's needs and manage critical project issues has resulted in the development of many long-standing client relationships. His experience includes complex urban design projects, historic landscape rehabilitation, parks and recreation, streetscape and plaza design, college and university campuses, commercial real estate, and multifamily housing.

**(312) 237-1303**

**[jbaldin@hitchcockdesigngroup.com](mailto:jbaldin@hitchcockdesigngroup.com)**

### *Project Experience*

---

**Civic Plaza Schematic Design Report**, Michigan City, Indiana

**Double Track NWI Project**, Northwest, Indiana

**Downtown La Porte Design Guidelines**, La Porte, Indiana

**Fullerton Avenue - Ashland Avenue to Southport Avenue**, Chicago, Illinois

**Halsted Point**, Chicago, Illinois

**Lake Michigan Gateway Implementation Strategy**, Michigan City, Indiana

**Marquette Park Lakefront East Master Plan and Capital Improvements**, Gary, Indiana

**North Harbor Neighborhood Master Plan and Capital Improvements**, East Chicago, Indiana

**Olde Western Avenue Streetscape**, Blue Island, Illinois



# **HITCHCOCKDESIGNGROUP**

**AUSTIN | CHICAGOLAND | INDIANAPOLIS | SOUTH FLORIDA**

[\*\*hitchcockdesigngroup.com\*\*](http://hitchcockdesigngroup.com)